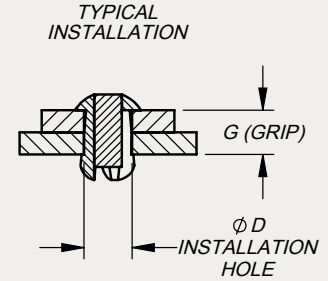
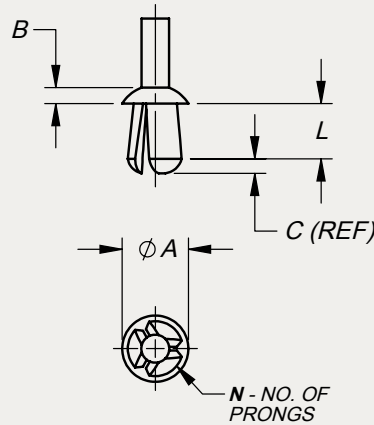




TYPICAL APPLICATION:
VERY LIGHT LOAD RIVET FASTENING GENERALLY IN PLASTIC MATERIALS

P/N: **PRR4-2G02NA**
APPROX. 2X SIZE



©2016 DUPREE, INC.

PART NO. EXAMPLE: **PRR 4 - 2 G02NA** = BLIND PLASTIC RIVET, ROUND HD, NOMINAL SIZE 1/8"
HOLE DIA x 1/8" MAT'L GRIP, NATURAL COLOR PLASTIC

SERIES	NOMINAL SIZE		HOLE SIZE ("D" DIM) FOR RIVET DIAMETER & GRIP LENGTH															COLOR CODE	DIMENSIONAL DATA								
	CODE	DESC	APPLICATION GRIP ("G" DIMENSION)																A	B	C	L	N				
			.031	.062	.094	.125	.156	.188	.219	.250	.281	.312	.344	.375	.406	.438	.469							.500			
PRR	4-2	1/8" DIA 1/8" GRIP	.125	.125	.129	.136															G02NA NATURAL COLORED NYLON SEE STOCK COLOR LIST Doc No. SCL870115 FOR OTHER AVAILABLE COLORS	.203	.053	.041	.171	3	
	6-2	3/16" DIA 1/8" GRIP	.187	.187	.189	.199																.297	.085	.073	.171	4	
	6-3	3/16" DIA 3/16" GRIP		.187	.187	.194	.204	.213															.297	.085	.077	.233	4
	8-4	1/4" DIA 1/4" GRIP			.250	.257	.261	.266	.272	.277													.454	.148	.085	.296	4
	8-8	1/4" DIA 1/2" GRIP								.250	.250	.250	.261	.266	.277	.290	.295	.302					.391	.120	.098	.546	4
	12-8	3/8" DIA 1/2" GRIP									.375	.375	.377	.386	.391	.397	.406	.413	.422				.453	.113	.100	.546	4

FEATURES:

1. These nylon blind rivets are intended for applications involving very light loads, generally in plastic materials.
2. Rivets can be supplied in colors matched to customer requirements. Color can be matched to blend with mounting surfaces or to be a color indicator to suit customer needs.

NOTES:

1. These nylon blind rivets are installed by placing rivet prongs into panel holes; bring panels together and place rivet head in contact with top panel, and then drive pin into rivet body.
2. Rivets can be removed by driving pin through and out of rivet, and then removing rivet body from panels. It is recommended to replace these rivets with new once they are removed from an installation.

SPECIFICATIONS:

1. Rivet material is polyamide nylon 66 resin. Rivets are not load-rated.
2. Rivets can be supplied in either natural-colored nylon, color code is "G02NA", or color matched to customer requirements. See Stock Color List, document no. SCL870115 for available colors.
3. Colors are matched to customer requirements. We recommend selection from FED-STD-595 whenever possible but we are also prepared to match customer furnished color chips or samples.
4. Recommended panel hole size is listed in above table and is based on application grip length ("G" dimension). For example, when using p/n: PRR8-4G02NA in panels where "G" = .188, the recommended hole size is .266 (17/64" drill).

STAKE FASTENER CO.

14395 RAMONA AVENUE
CHINO, CALIFORNIA 91710
(909) 597-4889 FAX (909) 597-3043
CAGE 12324 sales@stakefastener.com



BLIND RIVET
ROUND HEAD, PLASTIC