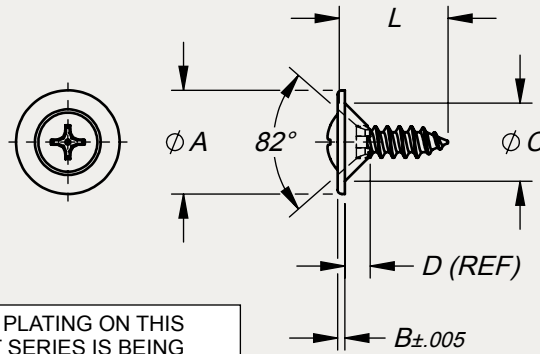




TYPICAL APPLICATION:
SECURING UPHOLSTERY-COVERED
PANELS



ZINC PLATING ON THIS
PART SERIES IS BEING
PHASED OUT IN FAVOR OF
AN RoHS-COMPLIANT ZINC

©2016 DUPREE, INC.

PART NO. EXAMPLE: **OHCWL 4SM 6 D S42GY** = 82° OVAL HEAD SCREW w/CAPTIVE LARGE O.D. NYLON WASHER, SHEET METAL, 4-24 X 3/8" LG, STEEL, PHILLIPS DRIVE, SEMI-GLOSS GRAY PER FED-STD-595 NO. 26622

HEAD TYPE	THREAD			L LENGTH						MATERIAL	COLOR CODE	DIM DATA ±.020			
	CODE	NOMINAL DIAMETER	PITCH	1/4	3/8	1/2	5/8	3/4	1			A	B	C	D
OHCWL	4SM	4	24	4	6	8	10	12	16	D STEEL PHILLIPS DRIVE	SEE STOCK COLOR LIST Doc No. SCL870115	.360	.025	.272	.089

FEATURES:

- The one piece screw and captive washer simplifies handling, installation and removal of attachment hardware.
- Attachment hardware, color-matched with the mounting surface eliminates distraction by blending with the background.
- Screw heads are formed by cold forging, followed by a case hardening and heat treating process which increases the basic tensile strength of the material. The resultant high tensile strength thus eliminates burring and yield of the substrate under the coating material.
- The thermosetting coating material used in combination with the relatively hard screw heads is resistant to abrasion and screwdriver damage. This feature virtually eliminates the need for touch-up painting after assembly.
- The nylon washer provides a resilient cushion to protect the finished surface of panels and equipment.
- A self-locking feature to prevent vibration from loosening the screw is achieved by the compression effect of the nylon washer between the screw head and the mounting surface.
- A seal for moisture, low pressure gases and vapors can be affected between the screw head and the mounting surface by the compression of the nylon washer.
- Type 'AB' thread style offers a fine pitch thread with a sharp gimlet point which aids entry of the screw where hole misalignment could cause problems.
- Care should be exercised to assure that the screwdriver tools meet the same quality and design specification in order to eliminate mismatching and subsequent damage to the drive recess and coating material.
- These screw assemblies are capable of forming mating threads in steel plate with a maximum Rockwell hardness of B70-85 without thread shearing or breakage.
- These screw assemblies are primarily intended for application in light sheet metal, plywood, certain plastics or material similar in composition where frequent removal is not necessary. They are not recommended for installation into brittle materials.
- The thread diameters and lengths listed in the table are industry standard sizes. Inventory levels of these sizes may vary at any one time due to customer demands and lead time necessary for production. Lengths not listed are also available on order.

SPECIFICATIONS:

- Screws are in accordance with ASME Standard No. B18.6.3, Recessed Head Tapping Screws, Type AB.
- Screws are stocked zinc plated per ASTM B633, Class SC1, Type II.
- Washer color is achieved by molding with pigmented nylon per ASTM D4066.
- Screw head coating and washer colors are matched to customer requirements. We recommend selection from FED-STD-595 whenever possible but we are also prepared to match customer-furnished color chips or samples.

NOTES:

- The screws listed in this series reflect high quality with emphasis on the forming of the Phillips recess to meet design specification.

STAKE FASTENER CO.
14395 RAMONA AVENUE
CHINO, CALIFORNIA 91710
(909) 597-4889 FAX (909) 597-3043
CAGE 12324 sales@stakefastener.com



UPHOLSTERY SCREW
COLORED 82° OVAL HEAD
w/CAPTIVE LARGE O.D. NYLON WASHER,
SHEET METAL THREAD, STEEL