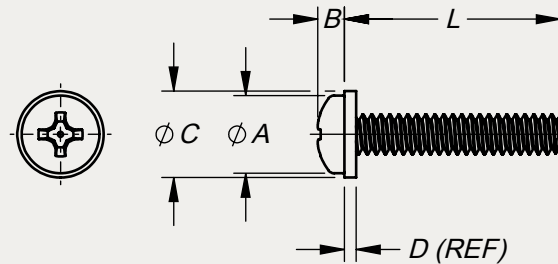




TYPICAL APPLICATION:  
SECURING INSTRUMENTS WITH  
LIMITED SPACE TO DASH PANELS



©2016 DUPREE, INC.

PART NO. EXAMPLE: **SCFW 6C 12 CP S05BN** = PAN HEAD SCREW w/CAPTIVE NYLON FLAT WASHER, .138-32 X 3/4" LG, COR. RES. STEEL, PHILLIPS DRIVE, SEMI-GLOSS BROWN PER FED-STD-595 NO. 20372

HEAD TYPE	THREAD		L LENGTH				TOLERANCE					MATERIAL	COLOR CODE	DIMENSIONAL DATA					
	CODE	SIZE	3/8	7/16	1/2	9/16	5/8	3/4	7/8	1	1 1/4			1 1/2	A	B	C	D	
SCFW	2C	.086-56 UNC-2A	6	7	8								CP CRES PHILLIPS DRIVE	SEE STOCK COLOR LIST Doc No. SCL870115	.167	.062	.198	.039	
															.155	.053	.168	.029	
	4C	.112-40 UNC-2A	6	7	8	9	10	12	14	16						.219	.080	.250	.042
																.205	.070	.220	.032
	6C	.138-32 UNC-2A	6	7	8	9	10	12	14	16	20					.270	.097	.300	.045
																.256	.087	.270	.035
	8C	.164-32 UNC-2A	6	7	8	9	10	12	14	16	20			.322	.115	.352	.048		
														.306	.105	.322	.038		
	10C	.190-24 UNC-2A	6	7	8	9	10	12	14	16	20	24			.373	.133	.403	.051	
														.357	.122	.373	.041		
	10F	.190-32 UNF-2A	6	7	8	9	10	12	14	16	20	24			.373	.133	.403	.051	
														.357	.122	.373	.041		

**FEATURES:**

- The one piece screw and captive washer simplifies handling, installation and removal of attachment hardware.
- Attachment hardware, color-matched with the mounting surface eliminates distraction from the information display by blending with the background.
- Screw heads are formed by cold forging which increases the basic tensile strength of the corrosion resistant steel by 25%. The resultant high tensile strength thus eliminates burring and yield of the substrate under the coating material.
- The nylon washer provides a resilient cushion to protect the finished surface of panels and equipment.
- A self-locking feature to prevent vibration from loosening the screw is achieved by the compression effect of the nylon washer between the screw head and the panel.
- A seal for moisture, low pressure gases and vapors can be affected between the screw head and the panel surface by the compression of the nylon washer.

**NOTES:**

- The screws listed in this series reflect aircraft quality with emphasis on the forming of the Phillips recess to meet design specification.
- Care should be exercised to assure that the screwdriver tools meet the

same quality and design specification in order to eliminate mismatching and subsequent damage to the drive recess and coating material.

- Inventory of all sizes listed in the table and colors listed in the forward section of this catalog are carried in stock to assure prompt deliveries. Lengths not listed are also available on order.

**SPECIFICATIONS:**

- Screws are corrosion resistant steel (CRES) and meet all requirements of MS51957 (UNC-2A) and MS51958 (UNF-2A).
- Screws are stocked passivated per SAE-AMS-2700.
- Threads are in conformance with MIL-S-7742 and H-28 Federal Handbook for threads.
- Screw lengths are expressed in code for 1/16-inch increments. Lengths not listed in above table may be specified, however, contact factory to determine availability.
- Washer color is achieved by molding with pigmented nylon per ASTM D4066. Natural (translucent) washer is furnished with polished head screw.
- Screw head coating and washer colors are matched to customer requirements. We recommend selection from FED-STD-595 whenever possible but we are also prepared to match customer-furnished color chips or samples.

**STAKE FASTENER CO.**

14395 RAMONA AVENUE  
CHINO, CALIFORNIA 91710  
(909) 597-4889 FAX (909) 597-3043  
CAGE 12324 sales@stakefastener.com



**SCREW / FLAT WASHER**

COLORED PAN HEAD w/CAPTIVE NYLON  
FLAT WASHER, MACHINE THREAD,  
CRES, RoHS-COMPLIANT