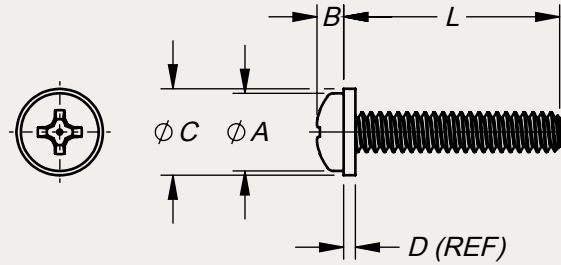




TYPICAL APPLICATION:
SECURING INSTRUMENTS WITH
LIMITED SPACE TO DASH PANELS



©2016 DUPREE, INC.

PART NO. EXAMPLE: **SCFW 6C 12 ZR S09BG =**

PAN HEAD SCREW w/CAPTIVE NYLON FLAT WASHER, .138-32 X 3/4" LG, STEEL, RoHS ZINC, PHILLIPS DRIVE, SEMI-GLOSS BEIGE PER FED-STD-595 NO. 23522

| HEAD TYPE | THREAD | | L LENGTH | | | | | | | | MATERIAL | COLOR CODE | DIMENSIONAL DATA | | | | |
|-----------|--------|--------------------|----------|------|-----|------|-----|-----|-----|----|----------|----------------------------------|---|------|------|------|------|
| | CODE | SIZE | 3/8 | 7/16 | 1/2 | 9/16 | 5/8 | 3/4 | 7/8 | 1 | | | 1 1/4 | A | B | C | D |
| SCFW | 2C | .086-56 UNC-3A | 6 | 7 | 8 | | | | | | | ZR STEEL PHILLIPS DRIVE | SEE STOCK COLOR LIST Doc No. SCL870115 | .167 | .062 | .198 | .039 |
| | 4C | .112-40 UNJC-3A | 6 | 7 | 8 | 9 | 10 | 12 | 14 | 16 | | | | .219 | .080 | .250 | .042 |
| | 6C | .138-32 UNJC-3A | 6 | 7 | 8 | 9 | 10 | 12 | 14 | 16 | 20 | | | .270 | .097 | .300 | .045 |
| | | | | | | | | | | | | | | .256 | .087 | .270 | .035 |

FEATURES:

1. The one piece screw and captive washer simplifies handling, installation and removal of attachment hardware.
2. Attachment hardware, color-matched with the mounting surface eliminates distraction from the information display by blending with the background.
3. Screw heads are formed by cold forging, followed by a heat treating process which increases the basic tensile strength of the material. The resultant high tensile strength thus eliminates burring and yield of the substrate under the coating material.
4. The nylon washer provides a resilient cushion to protect the finished surface of panels and equipment.
5. A self-locking feature to prevent vibration from loosening the screw is achieved by the compression effect of the nylon washer between the screw head and the panel.
6. A seal for moisture, low pressure gases and vapors can be affected between the screw head and the panel surface by the compression of the nylon washer.

NOTES:

1. The screws listed in this series reflect aircraft quality with emphasis on the forming of the Phillips recess to meet design specification.
2. Care should be exercised to assure that the screwdriver tools meet the same quality and design specification in order to eliminate mismatching and subsequent damage to the drive recess and coating material.

3. The thread diameters and lengths listed in the table are industry standard sizes. Inventory levels of these sizes may vary at any one time due to customer demands and lead time necessary for production. Lengths not listed are also available on order.

SPECIFICATIONS:

1. Screws meet all requirements of NAS600 series except for plating (see spec #2), including thread size .086-56 which is not listed as part of the NAS specification.
2. Screws are zinc plated per ASTM B633, Class SC1 (min), Type VI-yellow, hexavalent chromium free, RoHS-Compliant.
3. Threads are in conformance with MIL-S-8879 and H-28 Federal Handbook for threads.
4. These screw/washer assemblies are suitable for applications with temperatures up to 250°F.
5. Washer color is achieved by molding with pigmented nylon per ASTM D4066.
6. Screw head coating and washer colors are matched to customer requirements. We recommend selection from FED-STD-595 whenever possible but we are also prepared to match customer-furnished color chips or samples.

STAKE FASTENER CO.

14395 RAMONA AVENUE
CHINO, CALIFORNIA 91710
(909) 597-4889 FAX (909) 597-3043
CAGE 12324 sales@stakefastener.com



SCREW / FLAT WASHER

COLORED PAN HEAD w/CAPTIVE NYLON
FLAT WASHER, MACHINE THREAD,
ALLOY STEEL, RoHS-COMPLIANT ZINC