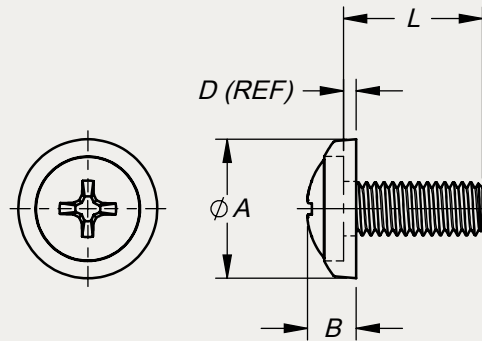




TYPICAL APPLICATION:
SECURING PANELS AND RACK
MOUNTED EQUIPMENT



©2016 DUPREE, INC.

PART NO. EXAMPLE: **PS 10F 10 ZR S07BG** = PAN-L-SCREW .190-32 X 5/8" LG, ALLOY STEEL, RoHS-ZINC PLT, PHILLIPS DRIVE, SEMI-GLOSS BEIGE PER FED-STD-595 NO. 22563

HEAD TYPE	THREAD		L LENGTH													MATERIAL	COLOR CODE	DIM DATA ±.020		
	CODE	SIZE	3/16	1/4	5/16	3/8	7/16	1/2	9/16	5/8	11/16	3/4	7/8	1	1 1/8			1 1/4	A	B
PS	2C	.086-56 UNC-3A	3	4	5	6	7	8										.250	.096	.034
	4C	.112-40 UNJC-3A	3	4	5	6	7	8	9	10	11	12	14	16				.312	.117	.037
	6C	.138-32 UNJC-3A	3	4	5	6	7	8	9	10	11	12	14	16				.375	.137	.040
	8C	.164-32 UNJC-3A	3	4	5	6	7	8	9	10	11	12	14	16				.438	.158	.043
	10F	.190-32 UNJF-3A		4	5	6	7	8	9	10	11	12	14	16	18	20		.500	.179	.046
	12C	.216-24 UNC-3A					7	8	9	10	11	12	14	16	18	20		.562	.201	.050
	14F	.250-28 UNJF-3A						8	9	10	11	12	14	16	18	20		.625	.232	.057

FEATURES:

- The one piece screw and captive washer simplifies handling, installation and removal of attachment hardware.
- Attachment hardware, color-matched with the mounting surface eliminates distraction from the information display by blending with the background.
- Screw heads are formed by cold forging, followed by a heat treating process which increases the basic tensile strength of the material. The resultant high tensile strength thus eliminates burring and yield of the substrate under the coating material.
- The thermosetting coating material used in combination with the relatively hard screw heads is resistant to abrasion and screwdriver damage. This feature virtually eliminates the need for touch-up painting after assembly.
- The nylon washer provides a resilient cushion to protect the finished surface of panels and equipment.
- A self-locking feature to prevent vibration from loosening the screw is achieved by the compression effect of the nylon washer between the screw head and the panel.
- A seal for moisture, low pressure gases and vapors can be affected between the screw head and the panel surface by the compression of the nylon washer.

NOTES:

- The screws listed in this series reflect aircraft quality with emphasis on the forming of the Phillips recess to meet design specification.
- Care should be exercised to assure that the screwdriver tools meet the same quality and design specification in order to eliminate mismatching and subsequent

- damage to the drive recess and coating material.
- The thread diameters and lengths listed in the table are industry standard sizes. Inventory levels of these sizes may vary at any one time due to customer demands and lead time necessary for production. Lengths not listed are also available on order. Length code designates nominal length in 1/16-inch increments (for example, length code 8 = 1/2-inch long screw).
- For color-coated screw less washer, omit the letter **P** from the head type code.

SPECIFICATIONS:

- Screws meet all requirements of NAS600 series, including thread size .086-56 and .216-24 which are not listed as part of the NAS specification, except for plating requirements.
- Plating: Zinc plate IAW ASTM B633, Class SC1 (min), Type VI-yellow, hexavalent chromium free, RoHS-compliant.
- Threads are in conformance with MIL-S-8879, except parts with thread codes "2C" & "12C" which are IAW MIL-S-7742.
- Thermosetting coating material is applied to screw head only. A color code of "N02NA" denotes a natural colored washer (molded in natural nylon) and a screw without thermosetting epoxy color coating.
- Washer color is achieved by molding with pigmented nylon per ASTM D4066.
- Screw head coating and washer colors are matched to customer requirements. We recommend selection from FED-STD-595 whenever possible but we are also prepared to match customer-furnished color chips or samples.

STAKE FASTENER CO.

14395 RAMONA AVENUE
CHINO, CALIFORNIA 91710
(909) 597-4889 FAX (909) 597-3043
CAGE 12324 sales@stakefastener.com



PAN-L-SCREW

COLORED HEAD, MACHINE THREAD,
ALLOY STEEL, RoHS-COMPLIANT ZINC