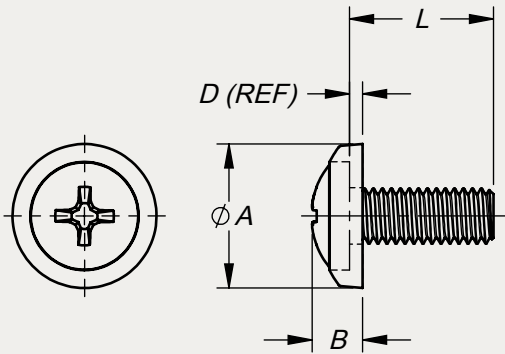


TYPICAL APPLICATION:
SECURING PANELS AND RACK
MOUNTED EQUIPMENT

DIMENSIONS ARE IN mm



ZINC PLATING ON THIS
PART SERIES IS BEING
PHASED OUT IN FAVOR OF
AN RoHS-COMPLIANT ZINC

©2016 DUPREE, INC.

PART NO. EXAMPLE: **MPS 5M 10 D S11BN** = METRIC PAN-L-SCREW, M5 X 0,8mm THREADS X 10mm LG, ALLOY STEEL, PHILLIPS DRIVE, SEMI-GLOSS BROWN PER FED-STD-595 NO. 20140

HEAD TYPE	THREAD			L LENGTH						MATERIAL	COLOR CODE	DIM DATA ±0,50		
	CODE	NOMINAL DIAMETER	PITCH	TOL. ±0,3		TOL. ±0,4		TOL. ±0,5				A	B	D
				8	10	13	16	20	25					
MPS	25M	2,5	0,45	8	10	13	16					7,0	2,96	0,86
	3M	3,0	0,5	8	10	13	16					8,0	3,34	0,94
	35M	3,5	0,6	8	10	13	16	20				9,5	3,62	1,02
	4M	4,0	0,7	8	10	13	16	20	25	D STEEL PHILLIPS DRIVE	SEE STOCK COLOR LIST Doc No. SCL870115	11,0	4,19	1,09
	5M	5,0	0,8		10	13	16	20	25			13,0	4,86	1,16
	6M	6,0	1,0			13	16	20	25			15,8	6,05	1,45

FEATURES:

- The one piece screw and captive washer simplifies handling, installation and removal of attachment hardware.
- Attachment hardware, color-matched with the mounting surface eliminates distraction from the information display by blending with the background.
- Screw heads are formed by cold forging which increases the basic tensile strength of the material. The resultant high tensile strength thus eliminates burring and yield of the substrate under the coating material.
- The thermosetting coating material used in combination with the relatively hard screw heads is resistant to abrasion and screwdriver damage. This feature virtually eliminates the need for touch-up painting after assembly.
- The nylon washer provides a resilient cushion to protect the finished surface of panels and equipment.
- A self-locking feature to prevent vibration from loosening the screw is achieved by the compression effect of the nylon washer between the screw head and the panel.
- A seal for moisture, low pressure gases and vapors can be affected between the screw head and the panel surface by the compression of the nylon washer.

NOTES:

- The screws listed in this series reflect high quality with emphasis on the forming of the Phillips recess to meet design specification.

- Care should be exercised to assure that the screwdriver tools meet the same quality and design specification in order to eliminate mismatching and subsequent damage to the drive recess and coating material.
- The thread diameters and lengths listed in the table are industry standard sizes. Inventory levels of these sizes may vary at any one time due to customer demands and lead time necessary for production. Lengths not listed are also available on order.
- For color-coated screw less washer, order head type code "MSP".

SPECIFICATIONS:

- Screws are in accordance with ASME Standard No. B18.6.7M.
- Screws are alloy steel and are stocked zinc plated in accordance with ASTM B633, Class SC1, Type II.
- Pan-L-Screws are suitable for applications with temperatures up to 250°F.
- Washer color is achieved by molding with pigmented nylon per ASTM D4066.
- Screw head coating and washer colors are matched to customer requirements. We recommend selection from FED-STD-595 whenever possible but we are also prepared to match customer-furnished color chips or samples.

STAKE FASTENER CO.
14395 RAMONA AVENUE
CHINO, CALIFORNIA 91710
(909) 597-4889 FAX (909) 597-3043
CAGE 12324 sales@stakefastener.com



METRIC PAN-L-SCREW
COLORED HEAD, METRIC THREAD,
ALLOY STEEL